

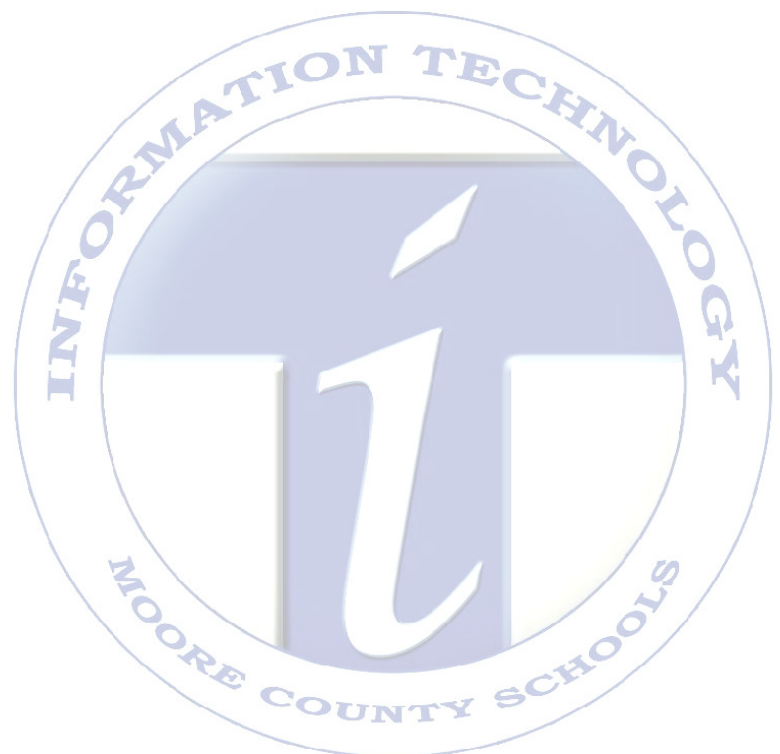


Moore County Schools  
Information Technology  
*"Infusing Technology into the Classroom"*



## ***IT Training and Staff Development***

## **Wireless Guest Access Instructions**



*"Infusing Technology into the Classroom"*

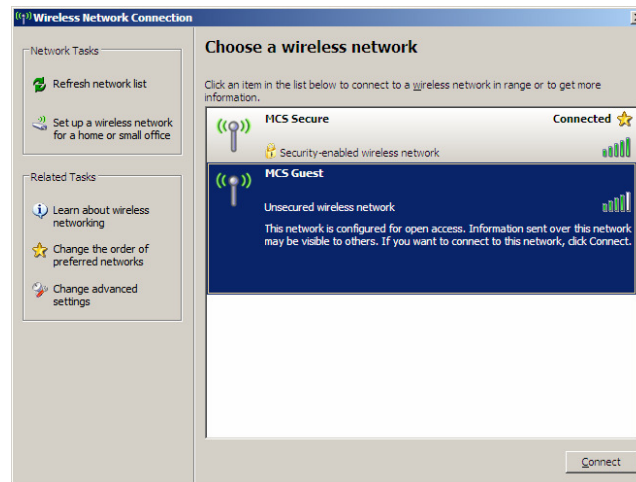
## ***MCS Guest Wireless System***

Moore County Schools provides limited use of the internal wireless network for non-MCS computers.

Each user who wishes to use the network must contact the technology contact at your school for a login id and password.

Follow the instructions below to access the MCS Guest Wireless network:

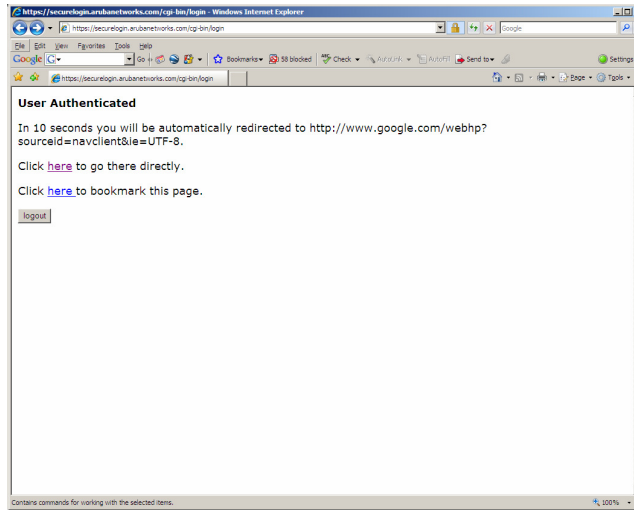
1. When you are in range of the wireless network, you will be able to see “MCS Guest” in the list of available wireless networks:



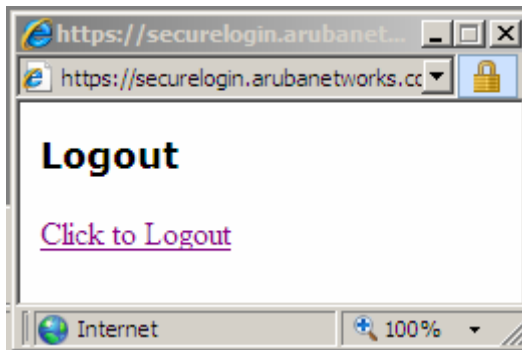
2. Choose “MCS Guest” and click “Connect”. Choose “Connect Anyway” if you are given a warning about an unsecured network.
3. The network will connect automatically, but you must login to access any internet resources. Open a web browser and go to any page – you will see the Wireless Portal login screen:



Enter your IT-provided userid and password on the screen as prompted. When you click “Log In” you will see the following screen:



4. This page will automatically close and go to your requested page.
5. A small window will remain open:



You may use this window to log out of the wireless access system. Further internet access will take you to the login portal page.

6. Internal access to the MCS network will be limited to the Internet. No network devices or shared drives will be available. All Internet traffic is monitored by our Internet Filter.